



DRILLING NEW TARGETS ALONG PROVEN GOLD TRENDS

April 25, 2022



Forward Looking Statements



This presentation is for informational purposes only and does not constitute an offer or a solicitation of an offer to purchase the securities referred to herein. Certain information set forth in this presentation contains “forward-looking statements” and “forward-looking information” within the meaning of applicable Canadian securities legislation (referred to herein as forward-looking statements). Forward-looking statements in this presentation includes, but are not limited to, statements related to activities, events or developments that Compass Gold Corporation (“Compass Gold” or, the “Company”) expects or anticipates will or may occur in the future, statements related to the Company’s business strategy, objectives and goals, plans regarding exploration of the Company’s projects and management’s assessment of future plans and operations. These statements are based on current internal expectations, estimates, projections, assumptions and beliefs, which may prove to be incorrect. Information in this presentation will be superseded by any subsequent disclosure the Company provides through SEDAR on www.sedar.com. Forward-looking statements in this presentation are based on a number of factors and assumptions made by management and considered reasonable at the time of this presentation. There can be no assurance that forward-looking statements will prove to be accurate, as actual results and future events could differ materially from those anticipated in such statements. The Company undertakes no obligation to update forward-looking statements if circumstances or management’s estimates or opinions should change except as required by applicable securities laws. The forward-looking statements contained herein are presented for the purposes of assisting investors in understanding the Company’s plan, objectives and goals and may not be appropriate for other purposes. The reader is cautioned not to place undue reliance on forward-looking statements in this presentation.

Industry Data: this presentation also contains or references certain market, industry and peer group data which is based upon information from independent industry publications, market research, analyst reports and surveys and other publicly available sources. Although the Company believes these sources to be generally reliable, such information is subject to interpretation and cannot be verified with complete certainty due to limits on the availability and reliability of raw data, the voluntary nature of the data gathering process and other inherent limitations and uncertainties. The Company has not independently verified any of the data from third party sources referred to in this presentation and accordingly, the accuracy and completeness of such data is not guaranteed.

Cautionary Note to United States Investors: the disclosure in this presentation may use mineral resource classification terms that comply with reporting standards in Canada, and mineral resource estimates that are made in accordance with NI 43-101. These standards differ significantly from the mineral reserve disclosure requirements of the United States Securities Exchange Commission (the “SEC”) set forth in Industry Guide 7. Consequently, information regarding mineralization contained in this presentation is not comparable to similar information that would generally be disclosed by U.S. companies in accordance with the rules of the SEC.

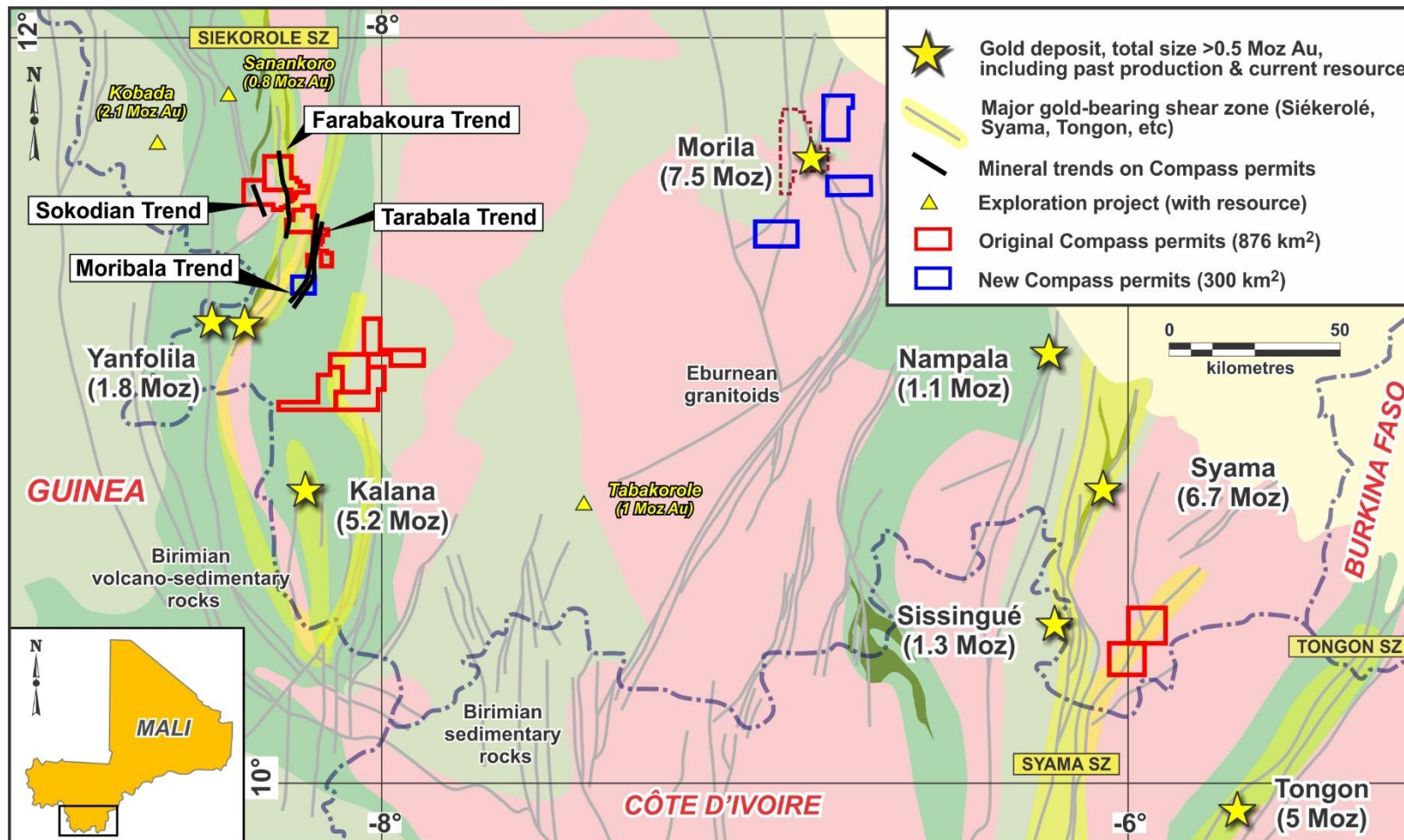
This presentation may use the terms “measured mineral resources”, “indicated mineral resources” and “inferred mineral resources”. United States investors are advised that while such terms are recognized and required by Canadian regulations, the SEC does not recognize them. It cannot be assumed that all or any part of “measured mineral resources,” “indicated mineral resources,” or “inferred mineral resources” will ever be upgraded to a higher category or converted into mineral reserves as defined in NI 43-101 or Industry Guide 7. Additionally, “inferred mineral resources” have a great amount of uncertainty as to their existence, and as to their economic and legal feasibility, therefore investors are also cautioned not to assume that all or any part of an inferred mineral resource exists or that any part of the mineral resources in this presentation are economically or legally mineable.

This document is not an offer of securities for sale in the United States or in any other jurisdiction. Securities may not be offered or sold in the United States absent registration or an exemption from registration under the U.S. Securities Act of 1933, as amended.

Currency: unless otherwise indicated, all dollar (“C\$”) values herein are in Canadian dollars.

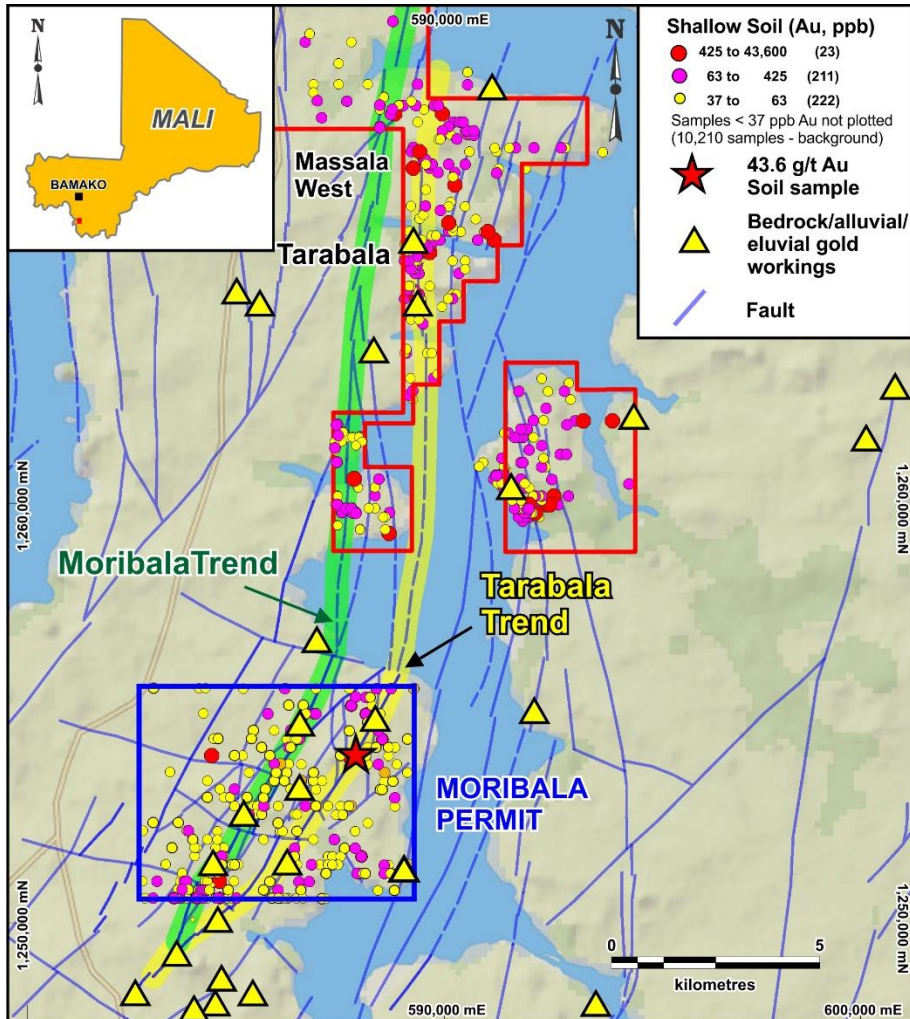
Qualified Person: this presentation has been reviewed and approved by Dr. Sandy M. Archibald, P.Geo, Compass’s Technical Director, who is the Qualified Person for the technical information in this presentation under National Instrument 43-101 standards.

Prolific Gold Region of Southern Mali



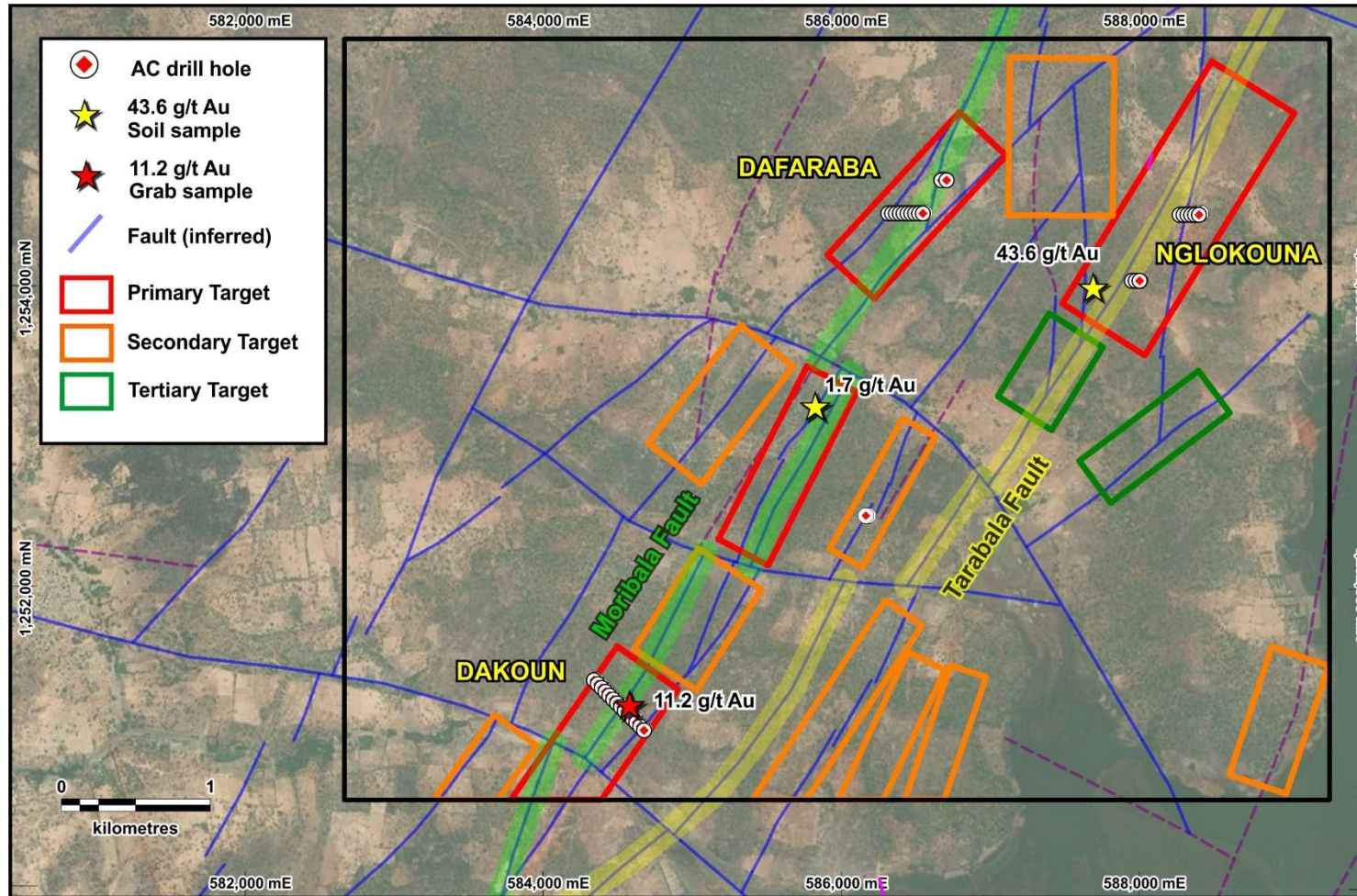
- One of the largest ground positions in southern Mali
 - 1,176 sq. km
- Discovered three trends (52 km) with abundant gold mineralization
- Recently added highly prospective new permit areas near world-class Morila mine
 - Compass team members helped discover Morila
- Continuing to identify new targets along known gold trends

Gold-Rich Fault Zone



- 16 km of 40 km along the Tarabala Trend under licence by Compass
- Abundant artisanal working on the Tarabala Trend
- ★ Strong gold soil anomalism associated with faults (**43.6 g/t Au**)
- Drilled high-grade narrow zones within wider lower-grade intervals (Tarabala and Massala West)
 - 24 m @ 2.35 g/t Au (Massala West)
 - 16 m @ 1.51 g/t Au (Tarabala)
 - 26 m @ 0.47 g/t Au (Tarabala)
- Moribala permit contains 6 km of the Tarabala Trend, as well as 6 km of a newly identified Moribala Trend
- Recently completed 43 AC drill holes (2,110 m) at 4 prospects at Moribala to test Tarabala and Moribala faults

Moribala AC Results



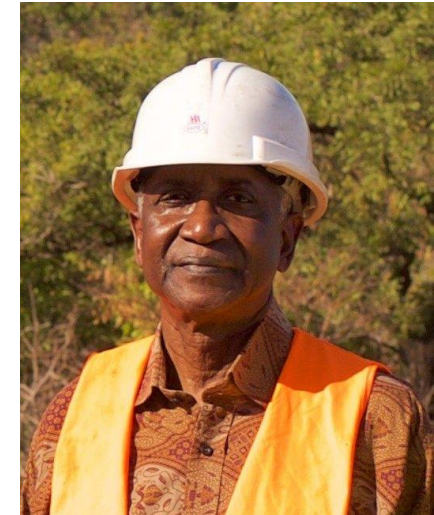
- Drilling confirmed gold mineralization on both faults
- Best results associated with the Moribala fault
 - Wide discrete mineralization at Dafaraba
 - Multiple zones of narrow mineralization over 350 m at Dakoun
- Drilling on Tarabala fault did not intercept wide zone of mineralization, so likely missed the structure
- **Next step – drill along strike at 200 m intervals + test workings with fence lines; perform addition ground geophysics**

Exciting New Permits – Morila Block

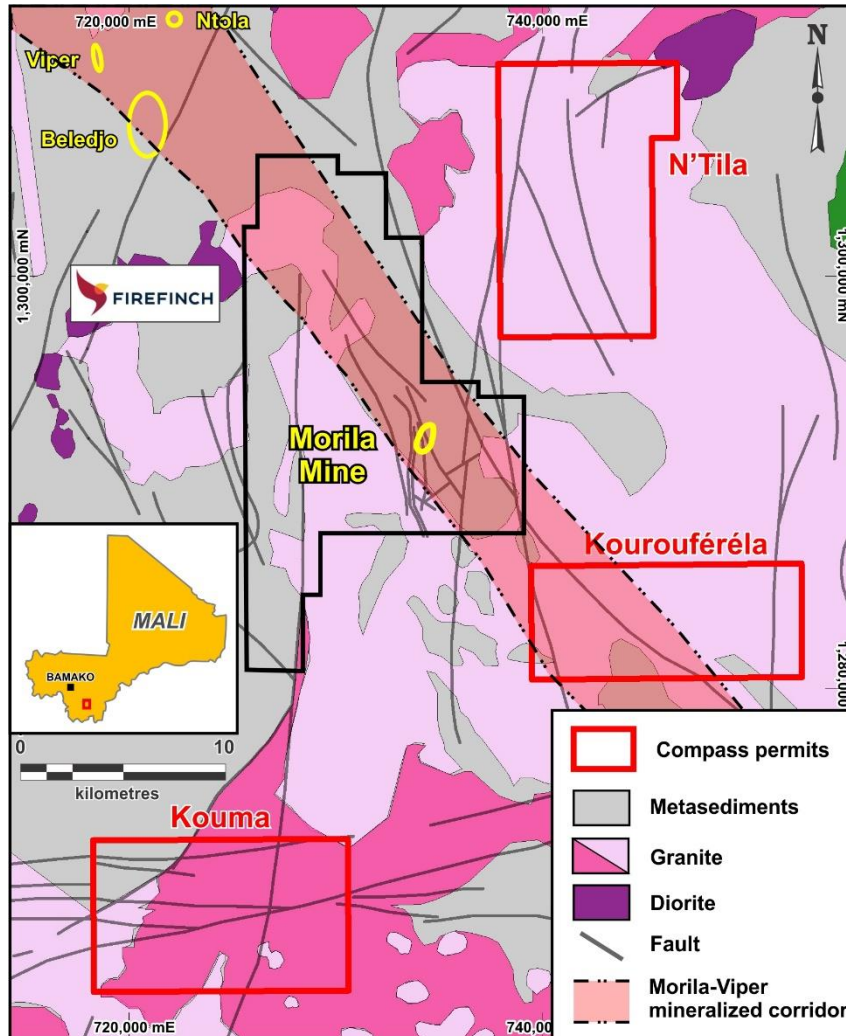


Morila Mine

- Dr. Madani Diallo, Compass Director and Country Manager, was the senior member of the team that discovered the giant Morila mine (7.5 Moz)
- Also helped discover Sadiola (>18.5 Moz), Syama (6.7 Moz), Essakane (8.9 Moz), Inata (3.1 Moz), and Komana (1.8 Moz)



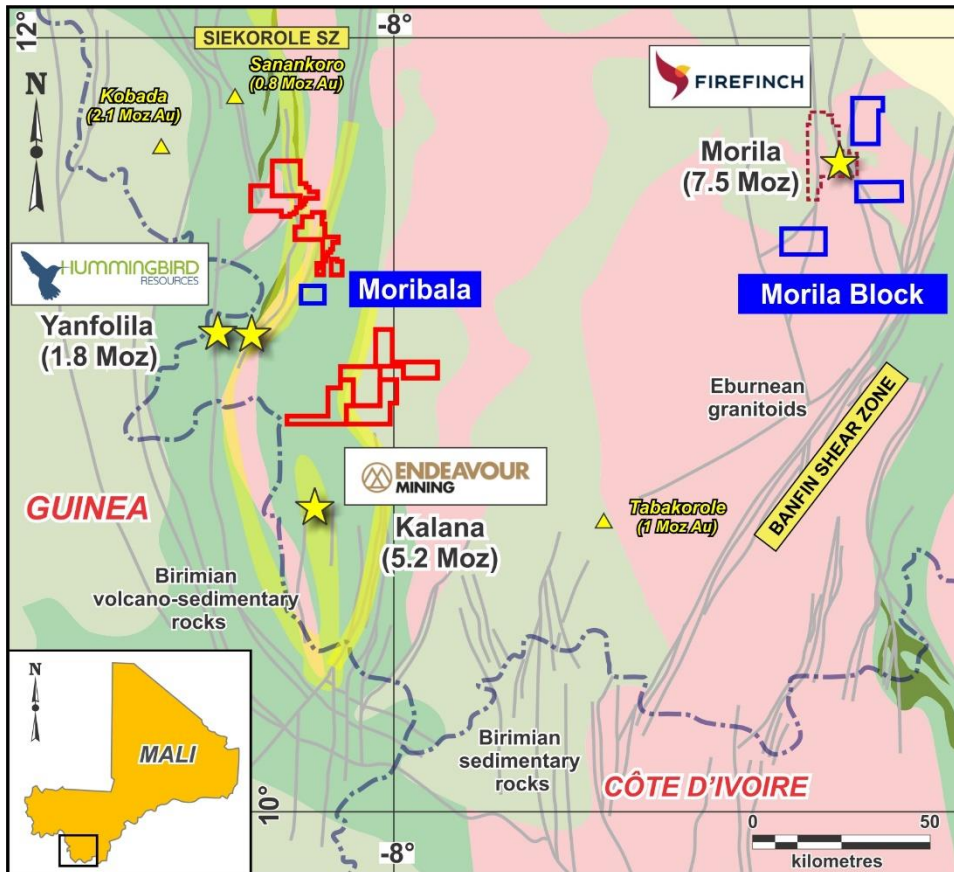
Morila Block



- Close to Morila Mine
- Similar geology and structure
 - Contact between igneous and sedimentary rocks
 - Presence of faults and later intrusions
- Current exploration program
 - 4,375 sample shallow soil survey (completed)
 - Satellite alteration and structural study (ongoing)
 - Reprocessing airborne geophysics (ongoing)
- Next steps
 - High-resolution airborne geophysics
 - Induced polarization ground geophysics
 - Air core drilling on best targets

Exploration Program 2022

13,500 m of drilling to delineate extent of bedrock mineralization on clearly defined trends



Moribala & Sankarani

- 40-hole (2,000 m) follow-up AC drilling
- Gradient IP
- Airborne geophysics
- Additional AC drilling (along strike) / RC drilling (deeper)

Morila Block

- Remote sensing study
- Airborne geophysics
- AC / RC drilling on best targets

9-Month Exploration Budget



Method	Meterage (m)	Cost (€)
Auger	10,000	150,000
Air Core (AC)	7,500	225,000
Reverse Circulation (RC)	5,000	250,000
Assays	22,500	337,500
Ground geophysics with processing	10 grids	100,000
Airborne geophysics	4 grids	80,000
Field personnel and G & A (Mali)	€30,000 / month	270,000
Total		€1,412,500 (C\$2,046,000)

Capital Markets Profile

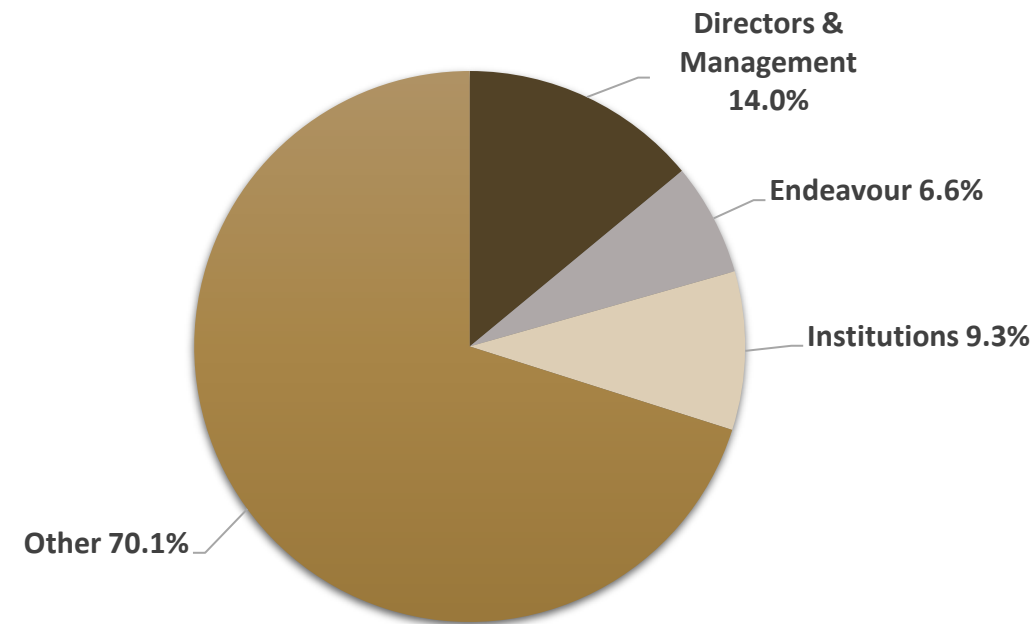


Capital Structure

Company Ticker	TSX-V:CVB
Share Price April 22, 2022	C\$0.14
52-Week Low/High	C\$0.11 – C\$0.30
Basic Shares Outstanding	86.5M
Options ¹	5.2
Broker Warrants	1.2
Fully Diluted Shares Outstanding	92.9M
Market Capitalization (basic)	\$12.1 M
Cash (Dec. 15, 2021)	\$1.4 M

1. 5,251,000 options outstanding with a weighted average exercise price of C\$0.40/share and a weighted average life of 3.4 years

Share Ownership



Tightly held share ownership with the top 15 shareholders owning over 30%

Appendix

Program Objective



Hummingbird's Komana West open pit along strike from Compass permits

Identify at least one 'Mineralized Target Zone' with the potential to become a near-surface open pit resource

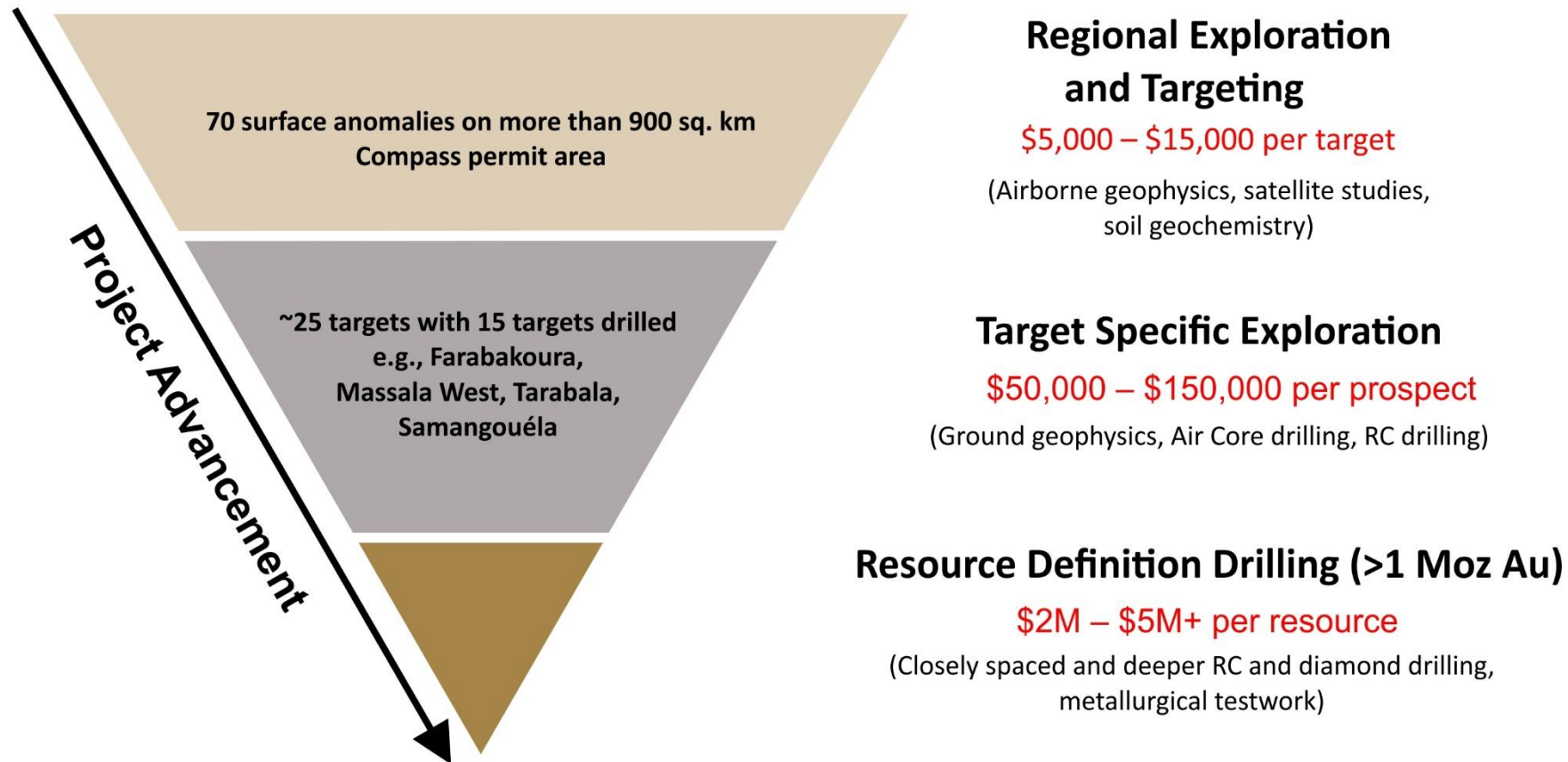
PARAMETERS:

- Strike extent (distance) (~700 m)
- Depth (<120 m)
- Width (>15 m)
- Gold grades (>0.4 – 2.0 g/t Au)
- **Continuity**

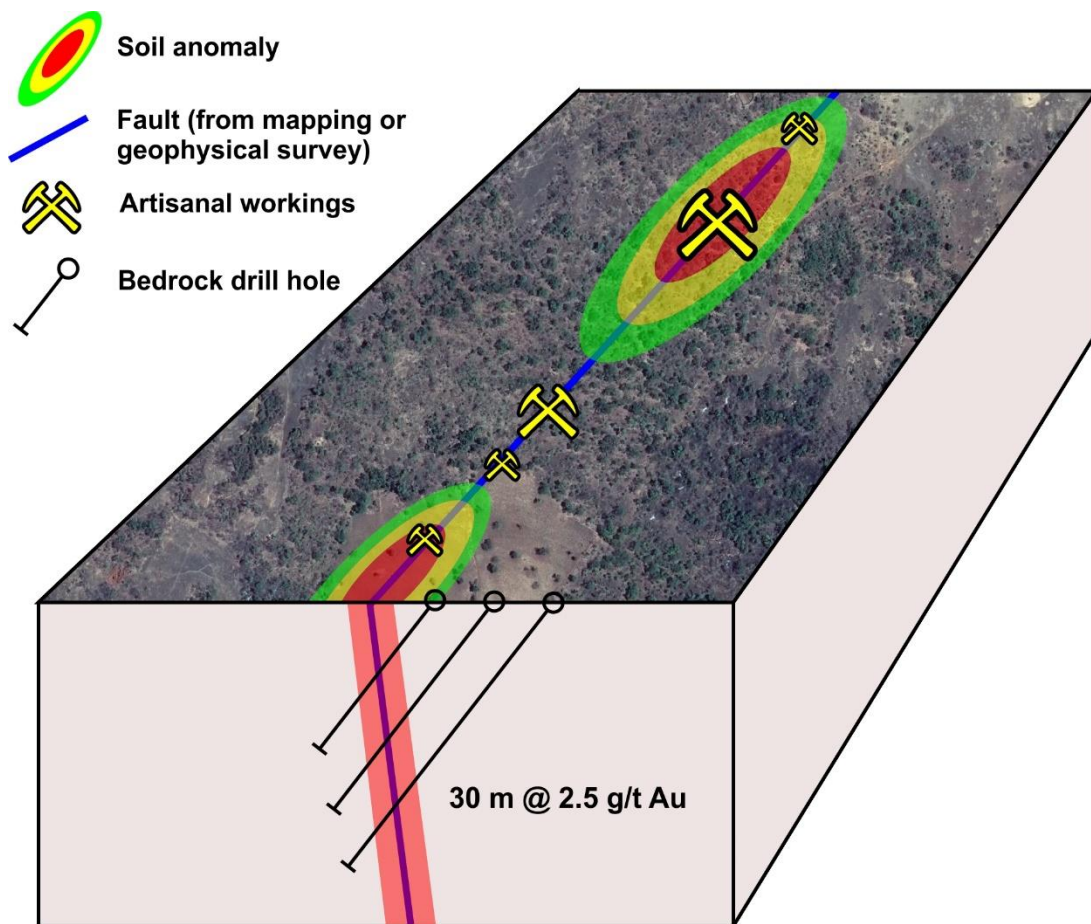
Aggressive Exploration Program



Compass Exploration Pipeline

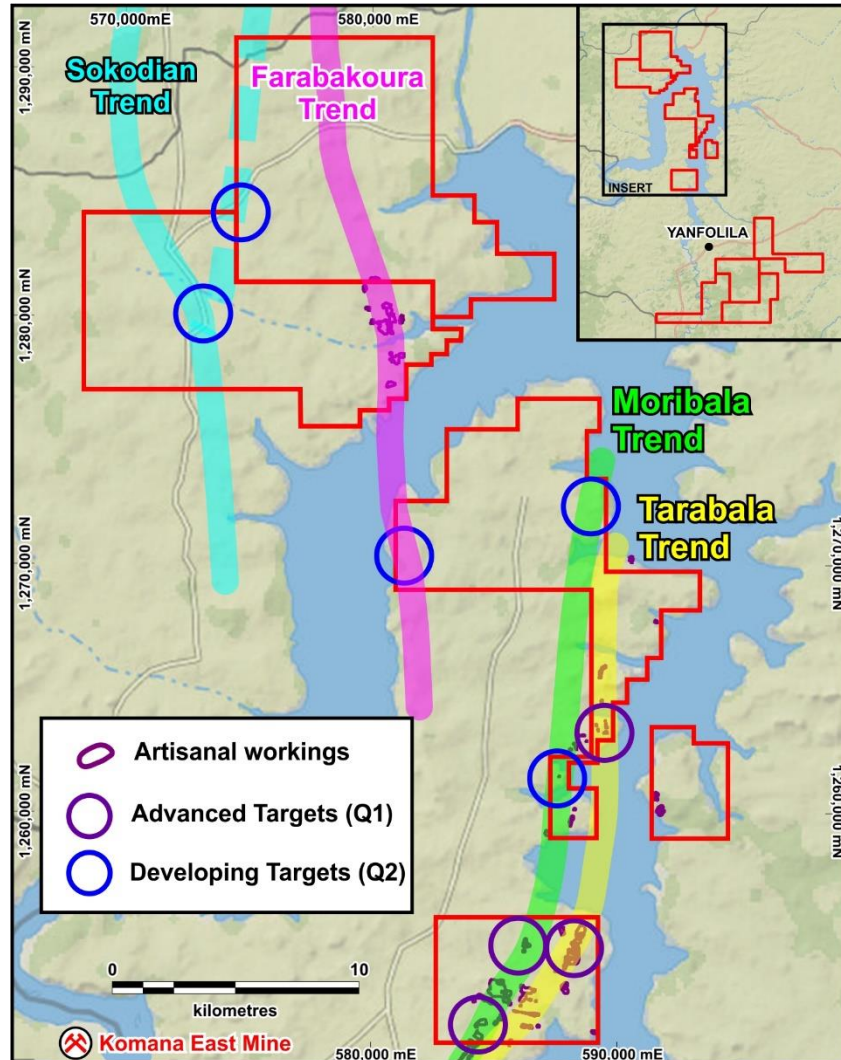


What is a trend?



- Associated with a geological **fault**, determined by:
 - Geological mapping
 - Satellite image interpretation
 - Geophysical surveying
- Associated with **gold mineralization**
 - Geochemical anomalism (soil / auger / rock (grab) **sampling**)
 - **Artisanal** gold workings
 - Drilling intercepts **gold in bedrock**
- Trends are named after the largest artisanal works on the fault, e.g., Tarabala, Farabakoura, Samagouela
- **Target requirements:**
 - On gold trend
 - Large enough for open pit potential (>750 m)

Advancing New Targets



Achieved:

- Identified seven targets along three known gold trends and two targets on a potential fourth trend
- Revealed gold-in-soil anomalies coincident with faults

Next steps:

- Initial auger drilling and ground geophysics
- Follow-up AC and RC drilling on best targets