



EXPLORING MULTIPLE PROSPECTS IN GOLD-RICH MALI

**AGGRESSIVE DRILL PROGRAM EXAMINING THREE LARGE
GOLD TRENDS**

April 23, 2021



Forward Looking Statements



This presentation is for informational purposes only and does not constitute an offer or a solicitation of an offer to purchase the securities referred to herein. Certain information set forth in this presentation contains “forward-looking statements” and “forward-looking information” within the meaning of applicable Canadian securities legislation (referred to herein as forward-looking statements). Forward-looking statements in this presentation includes, but are not limited to, statements related to activities, events or developments that Compass Gold Corporation (“**Compass Gold**” or, the “**Company**”) expects or anticipates will or may occur in the future, statements related to the Company’s business strategy, objectives and goals, plans regarding exploration of the Company’s projects and management’s assessment of future plans and operations. These statements are based on current internal expectations, estimates, projections, assumptions and beliefs, which may prove to be incorrect. Information in this presentation will be superseded by any subsequent disclosure the Company provides through SEDAR on www.sedar.com. Forward-looking statements in this presentation are based on a number of factors and assumptions made by management and considered reasonable at the time of this presentation. There can be no assurance that forward-looking statements will prove to be accurate, as actual results and future events could differ materially from those anticipated in such statements. The Company undertakes no obligation to update forward-looking statements if circumstances or management’s estimates or opinions should change except as required by applicable securities laws. The forward-looking statements contained herein are presented for the purposes of assisting investors in understanding the Company’s plan, objectives and goals and may not be appropriate for other purposes. The reader is cautioned not to place undue reliance on forward-looking statements in this presentation.

Industry Data: this presentation also contains or references certain market, industry and peer group data which is based upon information from independent industry publications, market research, analyst reports and surveys and other publicly available sources. Although the Company believes these sources to be generally reliable, such information is subject to interpretation and cannot be verified with complete certainty due to limits on the availability and reliability of raw data, the voluntary nature of the data gathering process and other inherent limitations and uncertainties. The Company has not independently verified any of the data from third party sources referred to in this presentation and accordingly, the accuracy and completeness of such data is not guaranteed.

Cautionary Note to United States Investors: the disclosure in this presentation may use mineral resource classification terms that comply with reporting standards in Canada, and mineral resource estimates that are made in accordance with NI 43-101. These standards differ significantly from the mineral reserve disclosure requirements of the United States Securities Exchange Commission (the “SEC”) set forth in Industry Guide 7. Consequently, information regarding mineralization contained in this presentation is not comparable to similar information that would generally be disclosed by U.S. companies in accordance with the rules of the SEC.

This presentation may use the terms “measured mineral resources”, “indicated mineral resources” and “inferred mineral resources”. United States investors are advised that while such terms are recognized and required by Canadian regulations, the SEC does not recognize them. It cannot be assumed that all or any part of “measured mineral resources,” “indicated mineral resources,” or “inferred mineral resources” will ever be upgraded to a higher category or converted into mineral reserves as defined in NI 43-101 or Industry Guide 7. Additionally, “inferred mineral resources” have a great amount of uncertainty as to their existence, and as to their economic and legal feasibility, therefore investors are also cautioned not to assume that all or any part of an inferred mineral resource exists or that any part of the mineral resources in this presentation are economically or legally mineable.

This document is not an offer of securities for sale in the United States or in any other jurisdiction. Securities may not be offered or sold in the United States absent registration or an exemption from registration under the U.S. Securities Act of 1933, as amended.

Currency: unless otherwise indicated, all dollar (“C\$”) values herein are in Canadian dollars.

Qualified Person: this presentation has been reviewed and approved by Dr. Sandy M. Archibald, P.Geo, Compass’s Technical Director, who is the Qualified Person for the technical information in this presentation under National Instrument 43-101 standards.

The Compass Gold Advantage



Proven & experienced leadership & exploration team

- Board, management and technical team highly experienced in the world-class gold region of southern Mali
- Led by co-founders & former executives of IAMGOLD
 - ✓ Team that built a global 1 million oz/year gold producer
- Exploration team lead by Dr. Madani Diallo
 - ✓ Responsible for multiple gold discoveries in Mali



Massive (867 km²) land package in Southern Mali

- Major gold district with several multi-million ounce gold deposits
 - ✓ Morila (7.5 Moz Au); Syama (6.7 Moz Au); Kalana (3.1 Moz Au)
 - ✓ Companies in the district include Barrick, B2Gold, Endeavour, Hummingbird, Firefinch, IAMGOLD and Resolute Mining
- Host to three major gold trends
 - ✓ *Tarabala*: 5 prospects along a 10 km long fault
 - ✓ *Samagouela*: gold intersected over 2 km of a 10 km long fault
 - ✓ *Farabakoura*: 18 prospects along a 14 km long fault



Exciting discoveries following initial drill season

- Confirmed extensive, shallow gold mineralization following initial 3,000 m drill programs
 - ✓ *Tarabala*: intersected wide zone of gold mineralization (16 m of 1.51 g/t Au) at shallow depth, containing narrower high-grade intervals. Open at depth. Pending results from AC drill program at Assama/Sodala in April 2021.
 - ✓ *Samagouela*: Q4 2020 AC drill program (41 holes, 1,901 m) confirmed shallow (< 50 m) gold target structure over 1,500 m.
- Identified at least 11 additional highly-prospective targets



Fully funded, aggressive drill program in H1 2021

- 11,500 m of air core drilling planned across 9 prospects
- RC drill program to follow up results in Q2 and H2 2021
- Well funded: ~C\$4M in cash (12/31/21)
- Completed three over-subscribed private placements
 - ✓ C\$2.7M in Apr. 2019, C\$5.4M in Nov. 2019 and C\$3.6M in Dec. 2020

Experienced Management & Board



Larry Phillips – President & CEO, Director

- One of the founders of IAMGOLD and Senior Executive for over 20 years
- From 1990 to 2011, he was directly involved in the exploration, development and operation of two major gold mines in Mali
- Served as the Director of The World Gold Council while at IAMGOLD



Dr. Madani Diallo – Exploration Manager, Director

- Over 35 years of experience in mineral exploration
- Responsible for multiple gold discoveries in Mali
- Exec. Dir. and Country Manager of Oklo Resources; CEO of West Africa Lime Company
- 7 years as Exploration Manager in Africa for BHP Minerals
- Former GM of AngloGold Ashanti's Malian operations
- Ph.D. in Geochemistry, University of Tachkent (Former USSR)



Dr. Sandy Archibald, PGeo - Technical Director

- Over 25 years of experience in mineral exploration; projects throughout the Americas, Europe, and Africa
- Extensive research on precious metal-rich systems
- Responsible for Compass's "National Instrument 43-101 Technical Report on the Sikasso Property, Southern Mali."
- Ph.D. in Economic Geology from McGill University & PGeo designation from Professional Geoscientists Ontario

Joe Conway – Independent Chairman

- Over 30 years of mining and financial industry experience
- Chairman of Harte Gold
- CEO of IAMGold from 2003 to 2010 and former President & CEO of Primero Mining

James Henderson – Independent Director

- Over 30 years of experience in funding and corporate advisory services
- Executive Chairman of Transocean Securities
- Chairman of West Africa Lime Company, and previously Chairman of Oklo Resources

Bill Pugliese – Independent Director

- Over 30 years of experience within the mining industry
- One of the founders of IAMGold



Discovery Team in Mali



Dr. Madani Diallo – Exploration Manager, Director

- Over 35 years of experience in mineral exploration
- Responsible for multiple gold discoveries in West Africa
- 7 years as Exploration Manager in Africa for BHP Minerals
- Former General Manager of AngloGold Ashanti's Malian operations



Samuel Tessougue, MSc – Chief Project Geologist

- Over 30 years of experience in mineral exploration in Mali
- 19 years in exploration with AngloGold Ashanti (Yatela, Sadiola), including Regional Exploration Manager in Mali



Kandioura Diaby, MSc – Senior Geologist (Administration and Logistics Manager)

- 21 years experience of gold exploration in the Birimian system of West Africa
- Has worked with Randgold Resources (Loulo), AngloGold Ashanti (Yatela), Resolute Mining (Syama/Golden Pride, Tanzania) and Newcrest Mining (Bonikro, Ivory Coast)



Dr. Souleymane Sangare – Chief Geologist

- Over 25 years of experience in exploration, project assessment and development
- Has worked for Newmont Mining, BHP Billiton, Mantle Diamonds, Verona Capital, Forbes Manhattan, Mantle, Robex Resources Inc. and Metalex Ventures Ltd
- Ph.D. from Moscow State Geological Prospecting Academy (1994)



Mamadou Sangare, MSc – Senior Geologist (Drilling)

- 18 years experience of gold exploration in the Birimian system of West Africa
- Has worked with Randgold Resources (Loulo), Etruscan Resources/Resolute Mining (Syama), Avnel Gold (Kalana), African Gold Group (Kobada) and Perseus Mining (Tengrela, Ivory Coast)

Capital Markets Profile



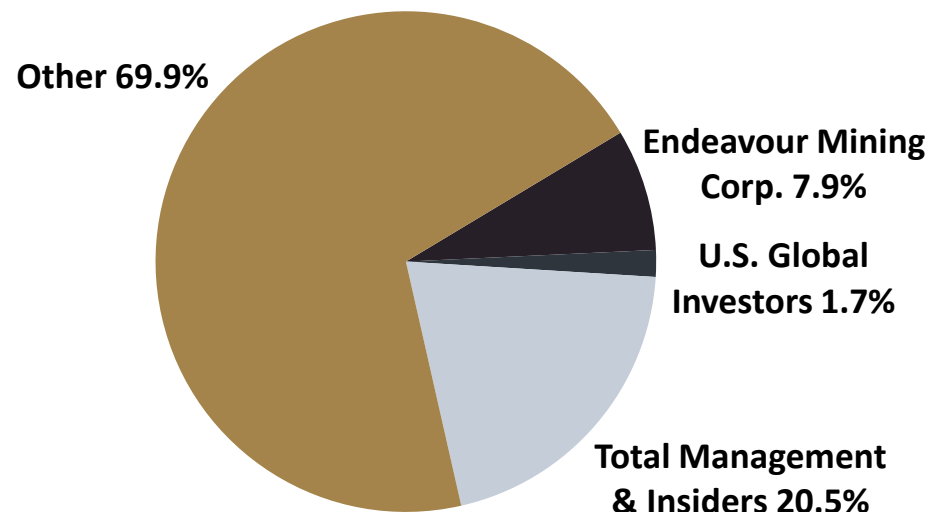
Capital Structure

Company Ticker	TSX-V:CVB
Share Price (April 22, 2021)	C\$0.21
52-Week Low/High	C\$0.14 – C\$0.41
Basic Shares Outstanding	72.7M
Options ¹	5.2
Warrants ²	12.7
Fully Diluted Shares Outstanding	93.6
Market Capitalization (basic)	C\$15.3
Cash ³	C\$3.8

Well financed through 2021 after raising C\$3.6M in December 2020

1. 5,251,000 options outstanding with a weighted average exercise price of C\$0.41/share and a weighted average life of 3.4 years
2. 12,000,000 warrants outstanding with an exercise price of C\$0.75/share expiring on November 29, 2021
3. December 31, 2020

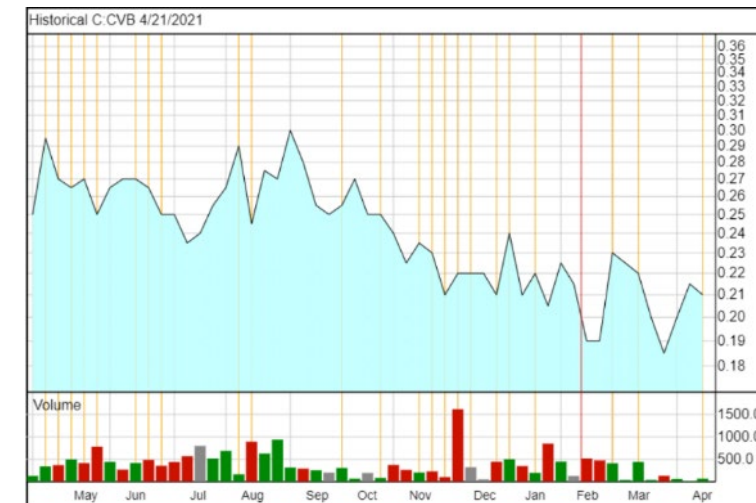
Share Ownership



Tightly held share ownership with the top 15 shareholders owning over 30%

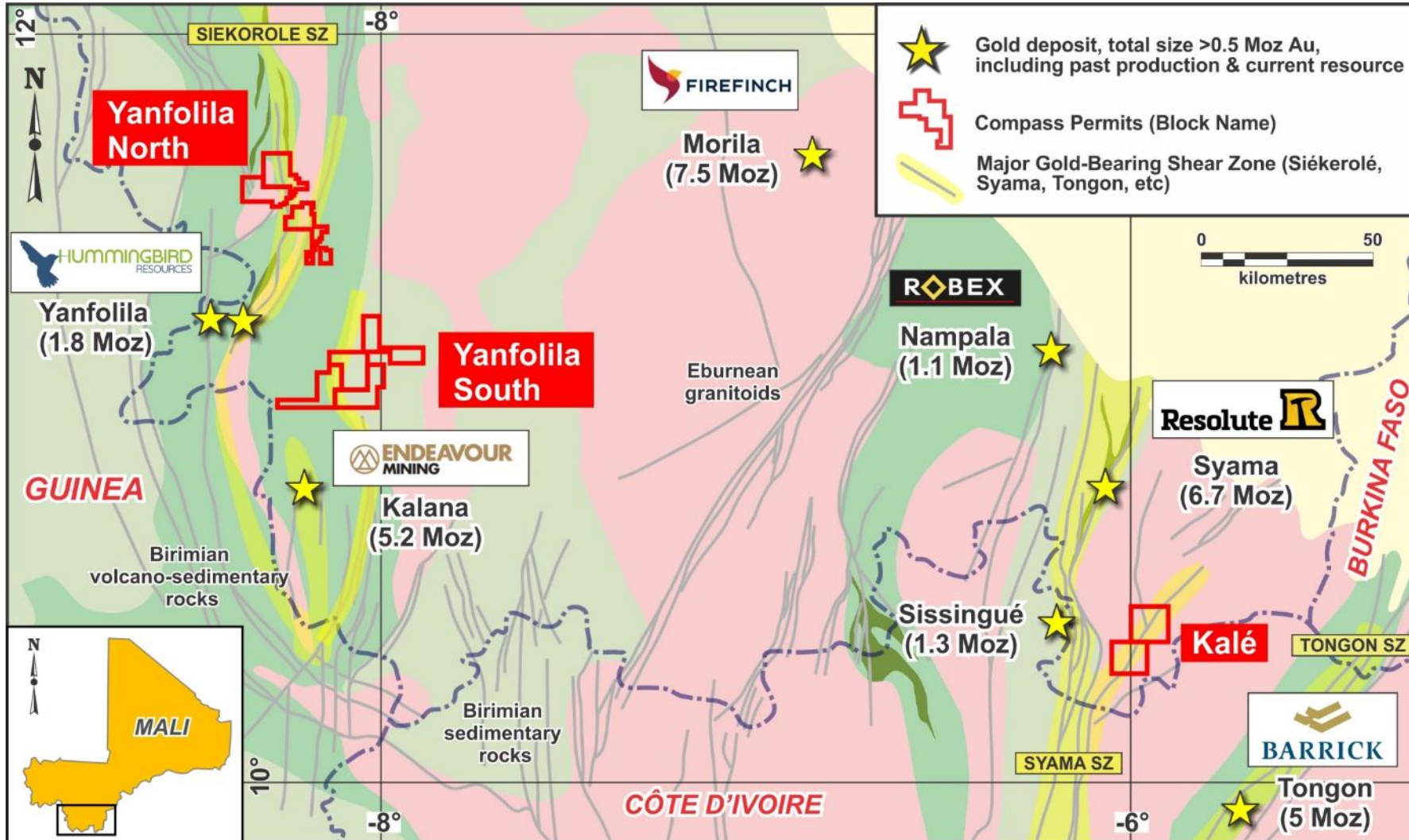
Share Price and Volume

(Last 12 Months)

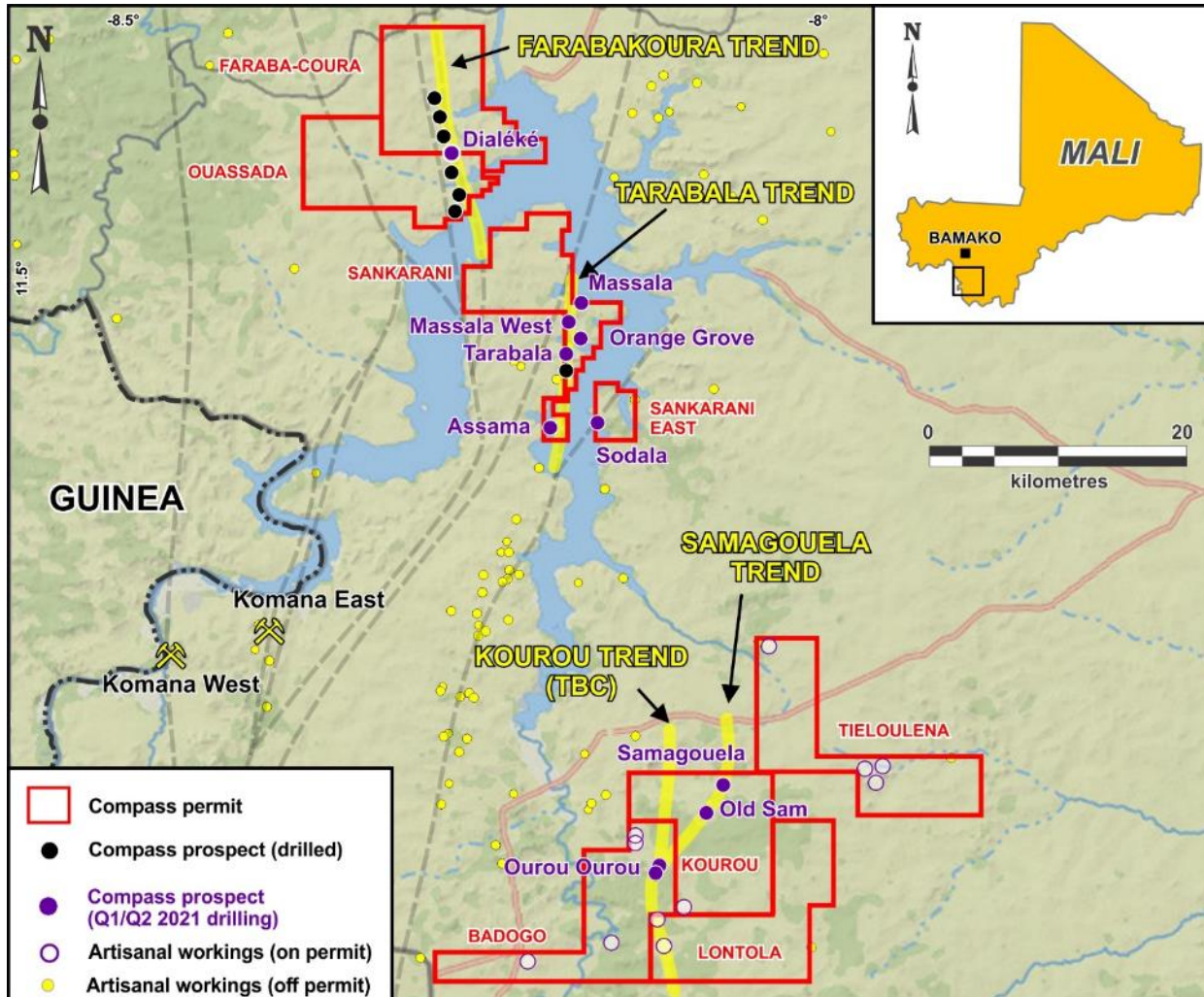


Trading well below 52-week high of C\$0.41/share

Prolific Gold Region of Southern Mali



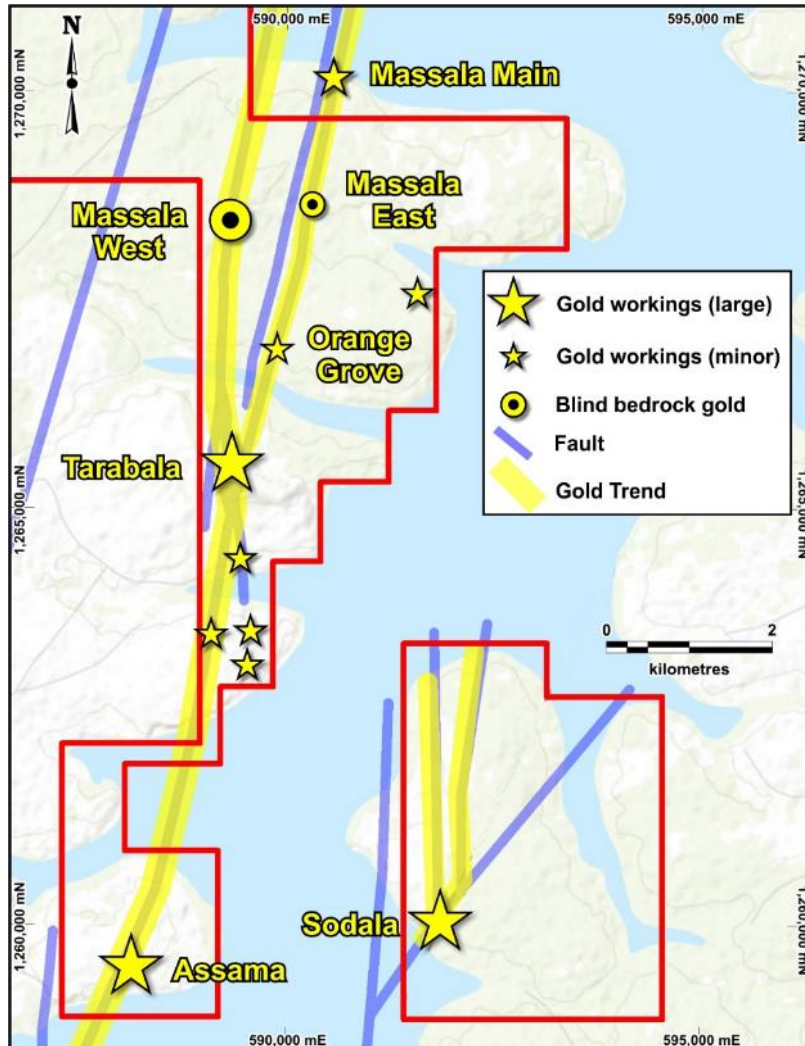
Identified Three Gold Trends on the Compass Property



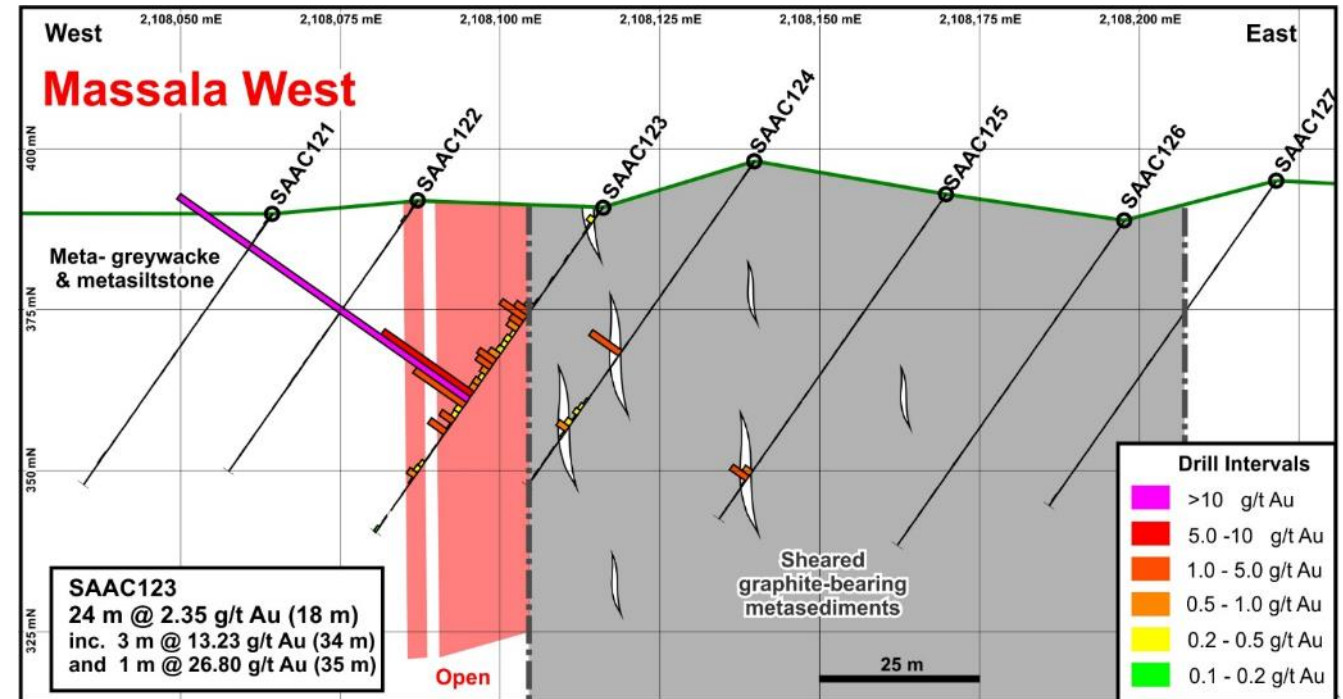
**2021 Goal: Confirm Potential for
at Least One Gold Resource**



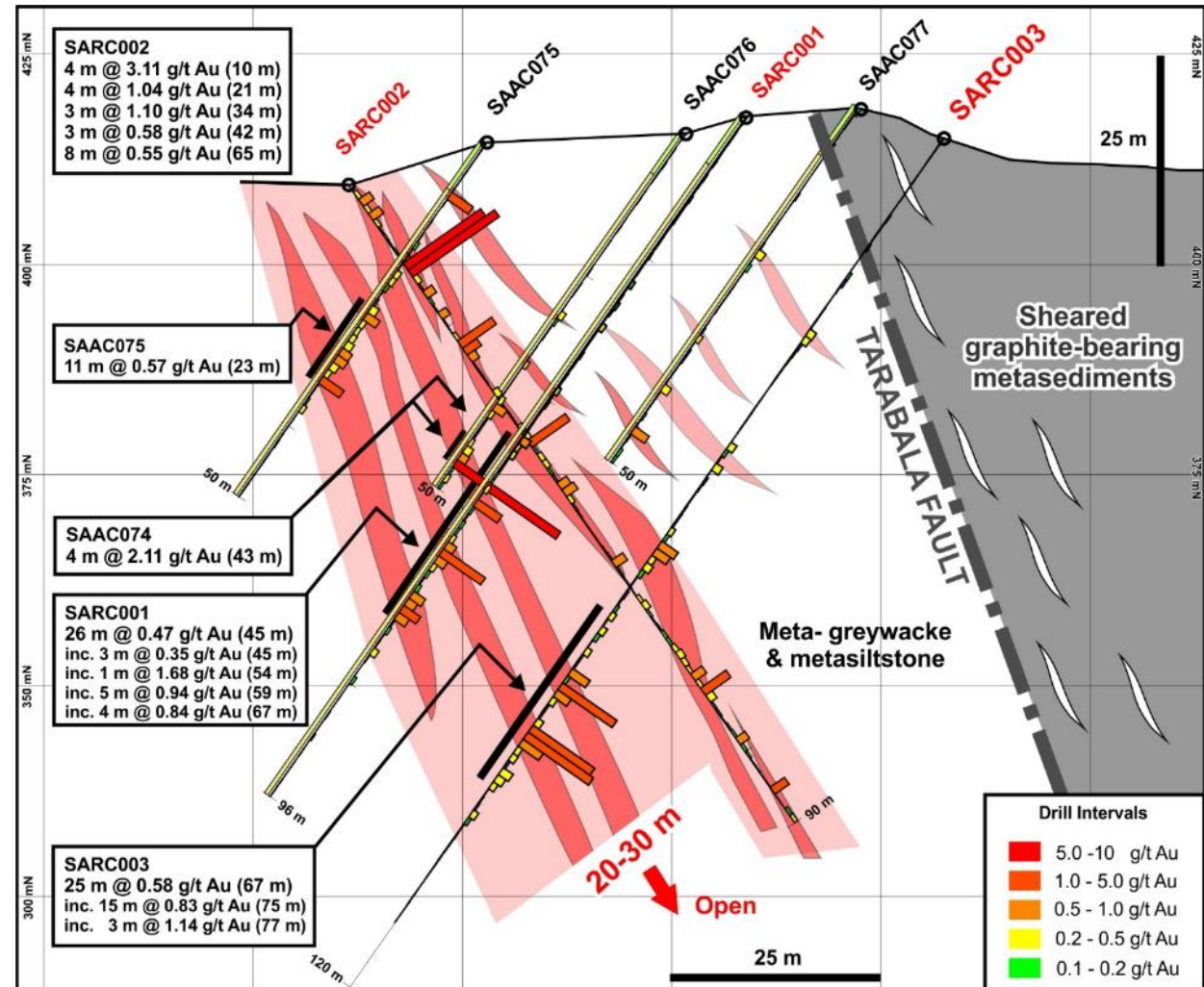
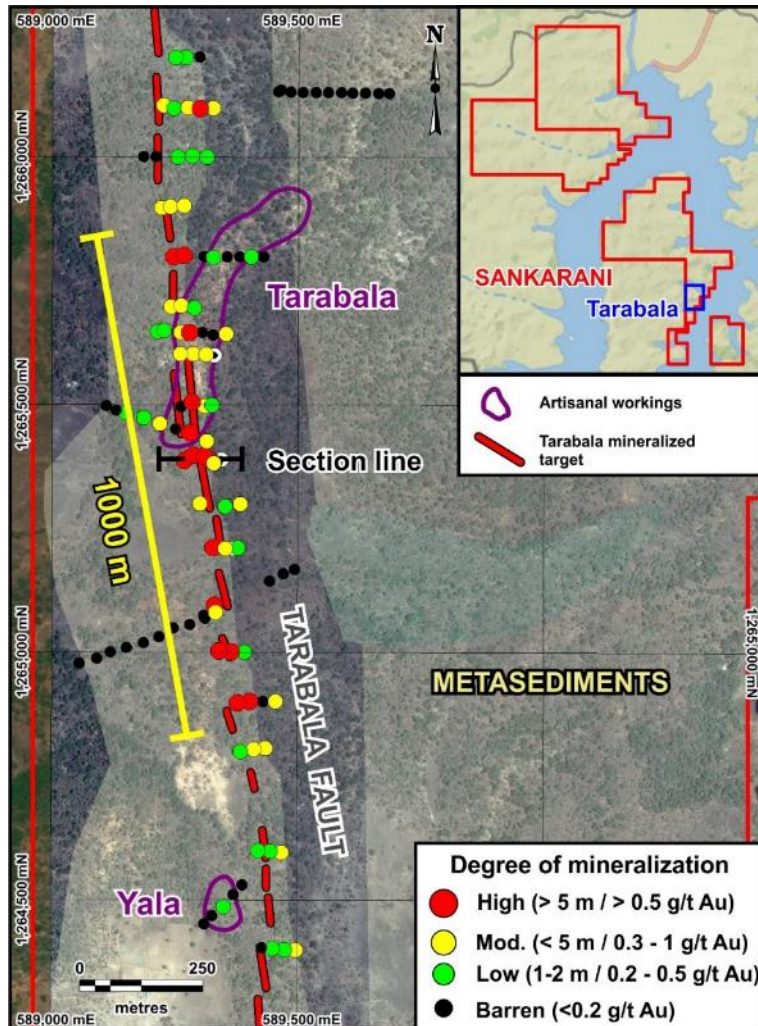
Tarabala Trend: 10 km of Exploration Potential



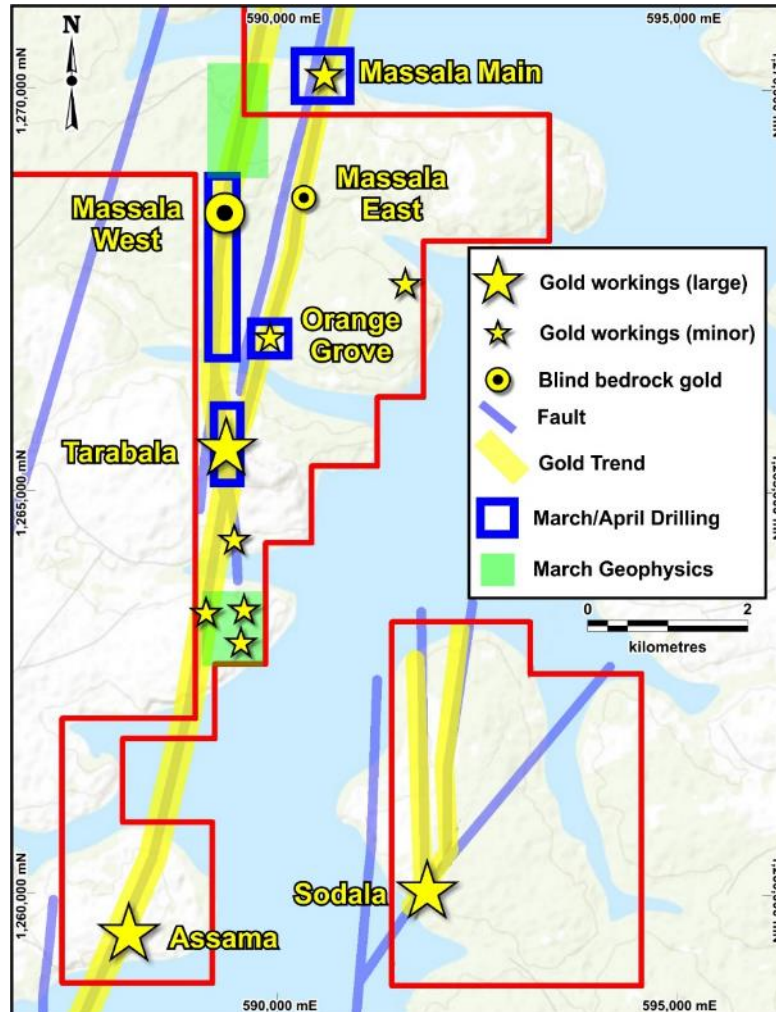
"Compass Drills 24 m Intercept Grading 2.35 g/t gold at New Prospecting within 10-km Tarabala Trend: Target Structure Present for at Least 2.5 km Along Strike." 16/3/2021



Tarabala Trend: Latest Results



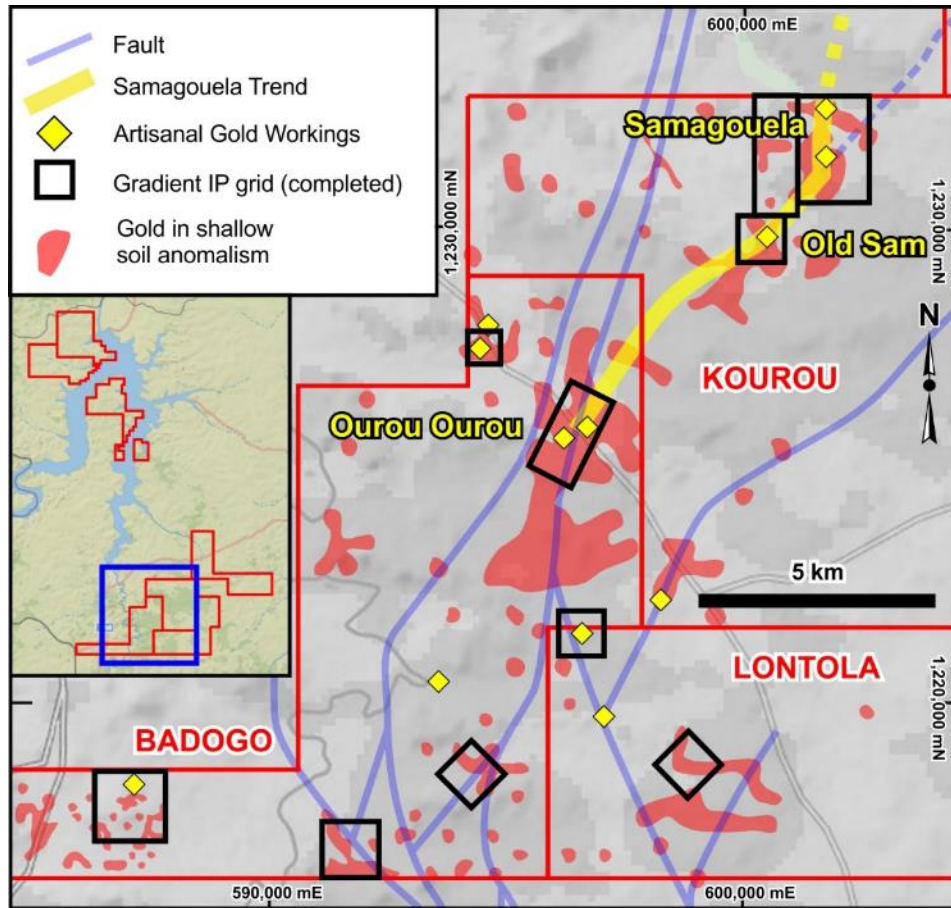
Tarabala: Next Steps



- Appraisal of 10,522 m drilling results from 6 prospects
- Assama and Sodala drilling results (44 holes, 2,320 m) expected imminently
- Drilling results from Massala Main, Massala West and Orange Grove over next 3-4 weeks
- Pads being prepared for 1,860 m AC drilling at Massala West (2 km strike length)
- Additional ground geophysics on two priority areas

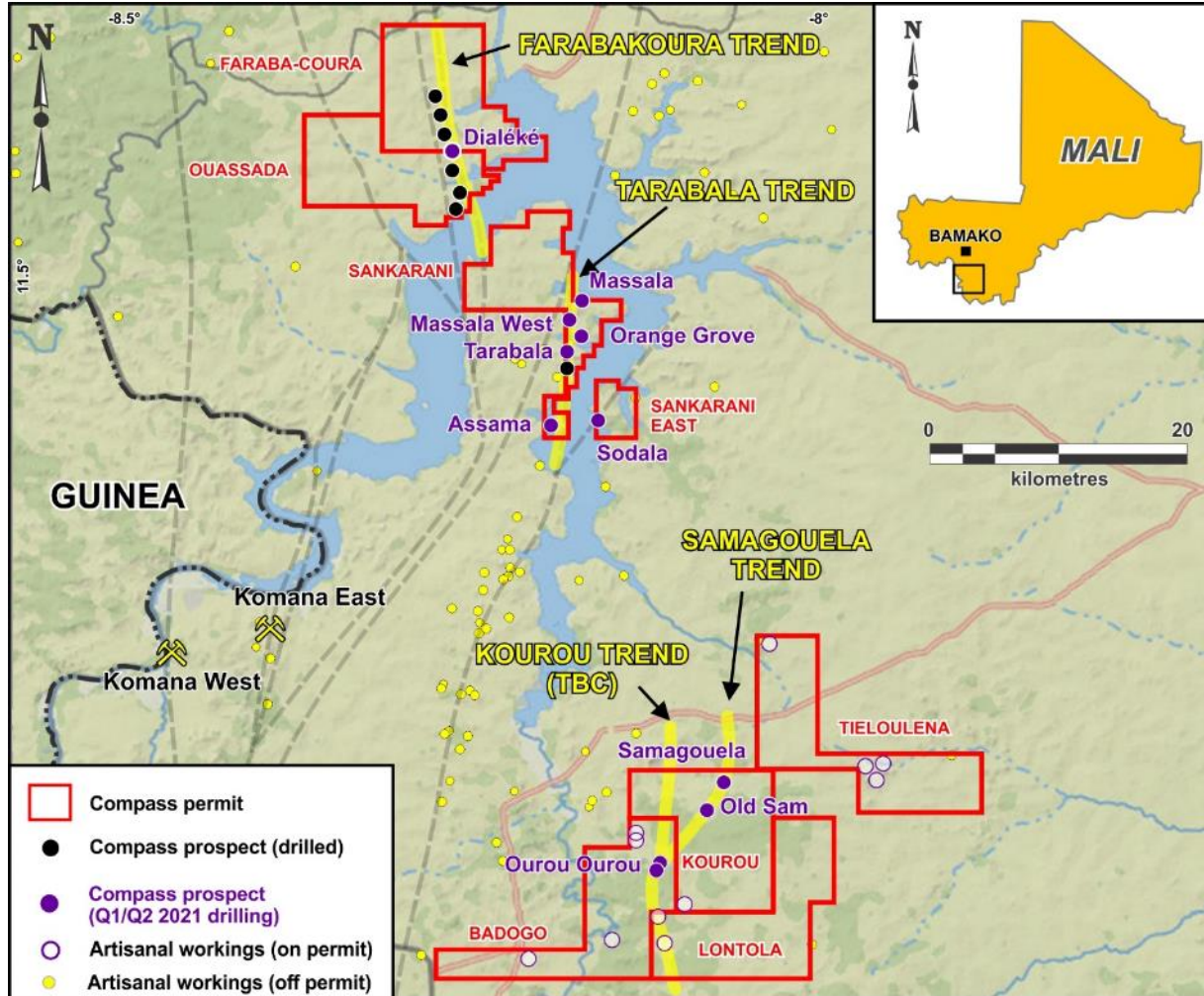


Samagouela Trend



- AC drilling of shallow (< 50 m) gold target structure over 1,500 m of prospective strike length at spacings of 100 to 500 m
- Completed 41-holes (1,901 m) in December 2020
- Identified sporadic mineralization at Samagouela prospect
 - 10 m @ 1.67 g/t Au (from 50 m) [KAAC13]
 - 9 m @ 5.79 g/t Au (from 45 m) [KAAC30]
 - 14 m @ 2.75 g/t Au (from 20 m) [KAAC44]
- Ongoing geophysics and geochemistry programs to test mineralization along the Samagouela and Kourou trends
- 18-hole (900 m) drilling currently underway at Old Sam

Planned 2021 Exploration Program



- Air Core drilling on prospects:
 - Tarabala: 2,500 m in Q1 **[Completed]**
 - Massala: 3,808 m in Q1 **[Completed, some results pending]**
 - 1,860 m planned for Q2
 - Assama: 1,236 m in Q1 **[Completed, results pending]**
 - Sodala: 1,084 m in Q1 **[Completed, results pending]**
 - Dialéké: 1,412 m in Q1 **[Completed, results pending]**
 - Old Sam Samagouela: 900 m **[In progress]**
- RC follow-up drilling
 - Tarabala: 1,200 m in Q2
- Conducting ground geophysics (Gradient IP) and processing previous surveys
- Infill soil geochemistry **[In progress]**



365 Bay Street, Suite 800
Toronto, Ontario, M5H 2V1
info@compassgoldcorp.com

Larry Phillips
CEO and Director

Mobile: +1 (416) 648-4767
lphillips@compassgoldcorp.com

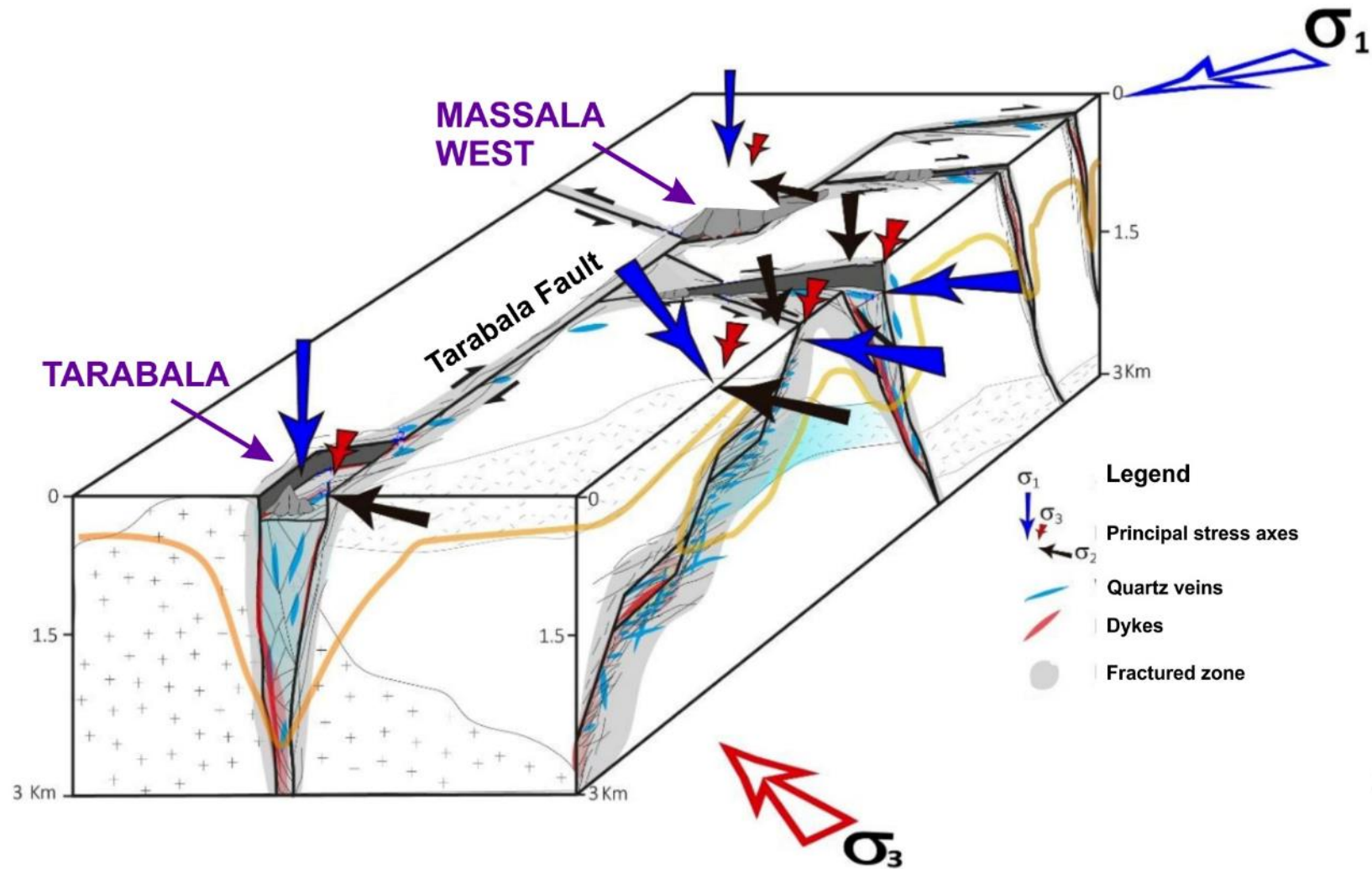
Greg Taylor
Director of Investor Relations

Mobile: +1 (416) 605-5120
gtaylor@compassgoldcorp.com



APPENDIX

What We're Learning...

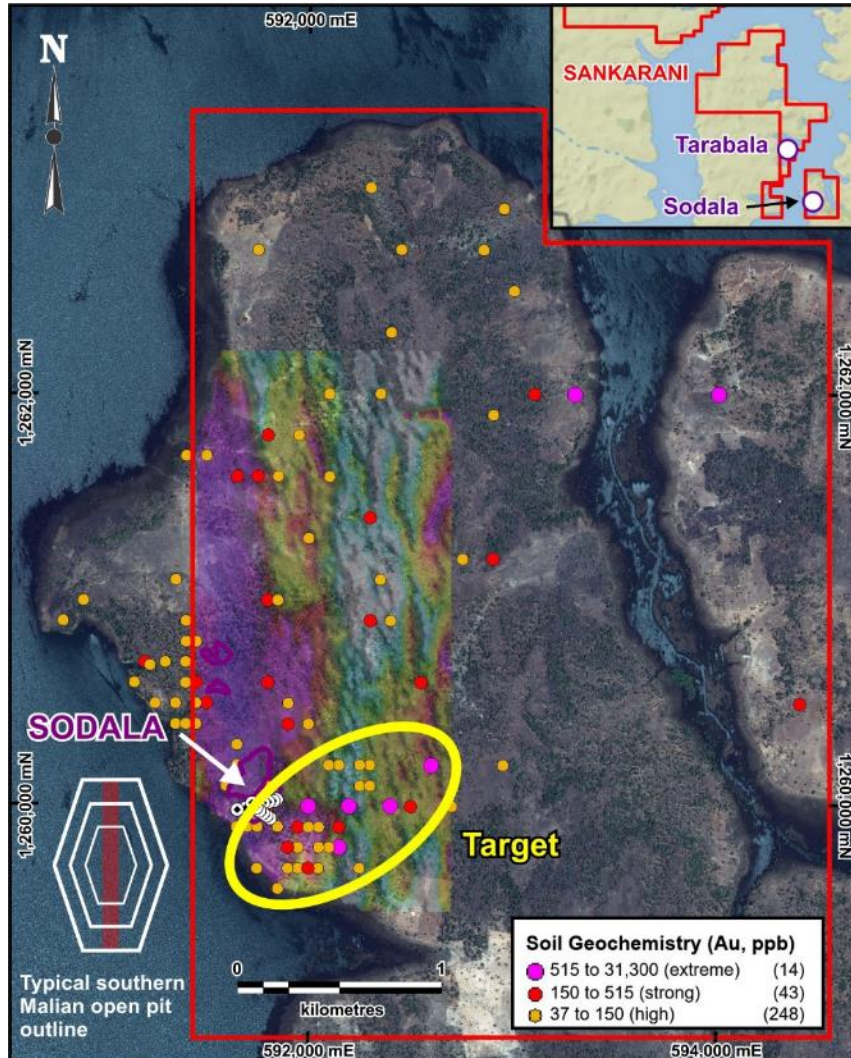


Advancing Multiple Prospects on Highly Prospective Virgin Ground



	Structure	Geochemical	Geophysics	Artisanal Workings	Drilling	Commercial Grade/Width
Farabakoura Trend						
Boumban North	✓	✓	✓		✓	✖
Bombon Central	✓	✓	✓		✓	✖
Boumban South	✓	✓	✓		✓	✖
Dialéké	✓	✓	✓	✓		?
Farabakoura NW	✓	✓	✓	✓	✓	?
Farabakoura	✓	✓	✓	✓	✓	✓
Kabangoué	✓	✓	✓	✓	✓	✖
Kabangoué South	✓	✓	✓	✓	✓	✖
Tarabala Trend						
Massala	✓	✓	✓	✓	✓	?
Massala West	✓	✓	✓	✓	✓	✓
Orange Grove	✓	✓	✓		✓	?
Tarabala	✓	✓	✓	✓	✓	✓
Yala	✓	✓	✓	✓	✓	✖
Assama	✓	✓	✓	✓	✓	?
Sodala Splay						
Sodala	✓	✓	✓	✓	✓	✓
Samagouela Trend						
Samagouela	✓	✓	✓	✓	✓	✖
Old Sam	✓	✓	✓	✓	✓	?
Orou Ourou	✓	✓	✓	✓		?
Kourou Trend						
Orou Ourou	✓	✓	✓	✓		?
Djiguiba	✓	✓		✓		?
Moussaoule (Moussa)	✓	✓		✓		?
Isolated Prospects						
Noumou (Badogo)	✓	✓		✓		?
Niaguélé (Badogo)	✓	✓		✓		?
Wolokourou (Badogo)	✓	✓		✓		?
Somala (Tieloulena)	✓	✓		✓		?
Guelo (Tieloulena)	✓	✓		✓		?

Sodala Prospect Investigating Extreme Soil Anomalies

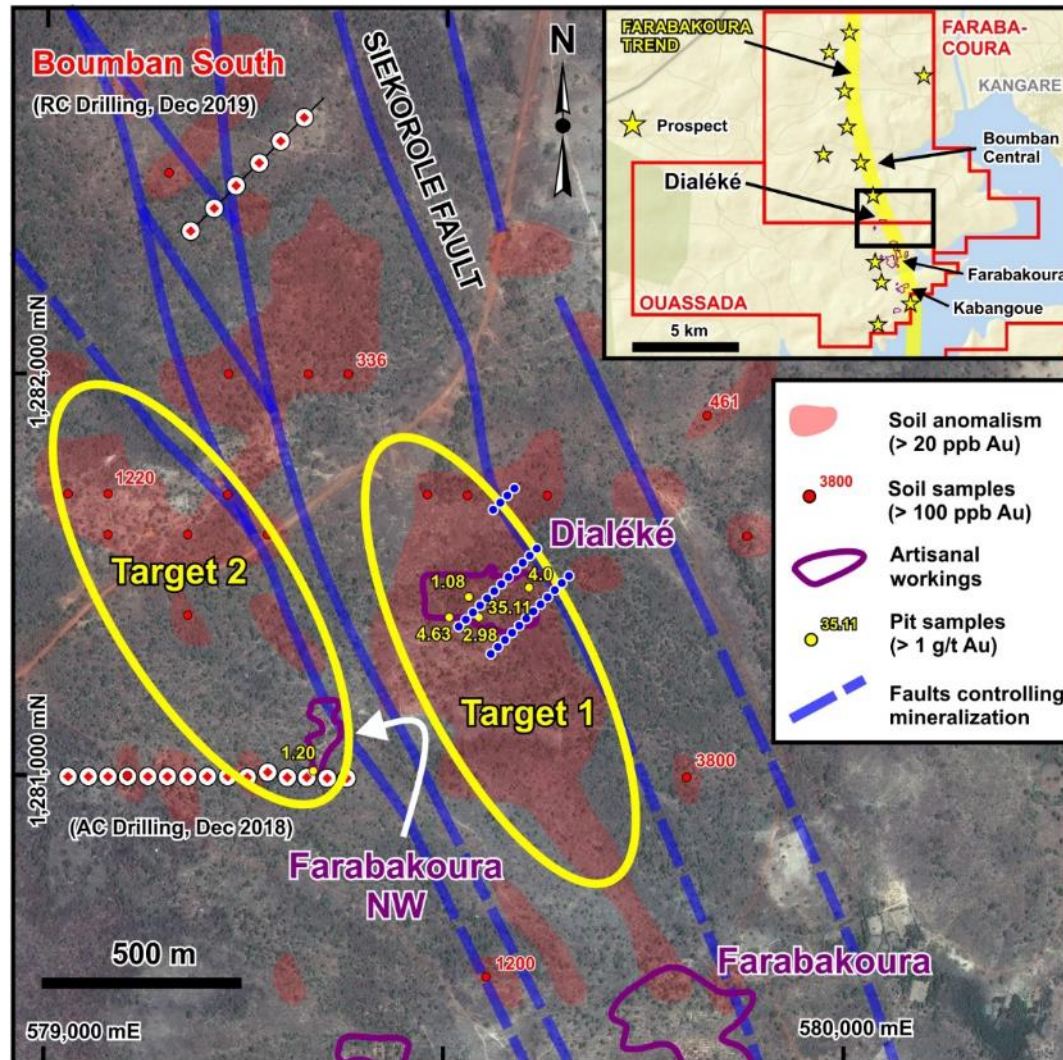


- Q4 2020 Gradient IP defined precise location of target structures associated with extreme soil anomalism
 - Samples of up to 31 g/t Au
- **Q1 2021 AC drilling** (20-holes, 1,084 m)
 - Two fences in NW-orientation
 - Target geophysical trends that likely correlated with mineralization
 - Targeting small (600 x 600 m), high-grade (>5 g/t Au) vein system
 - Results pending

Next Step:

- **Q2 2021 RC drilling** (5-holes, 700 m)
 - Bedrock drilling (up to 150 m holes)

Farabakoura Trend Dialéké Prospect



Pit Reject Sample Results

- Samples from artisanal workings returned grades up to **35.1 g/t Au**
- Associated with quartz-sulphide veins cutting a granodiorite

Gradient IP (1.5 sq. km) Results

- Identified precise contact of the granodiorite and shear zone
- Identified zone of intense fracturing (Target 1)

Shallow Soil Results

- 320 sample program on a 100 x 100 m grid
- Identified large zones (up to 1,200 m x 500 m) at the granodiorite-fault contact
- Samples up to 1.22 g/t Au in the new assays data (Target 2)
 - 3.80 g/t Au (east of Target 1) from 2018 soil sampling

Drilling

- 28 AC holes (1412 m) in late March 2021 (results pending)